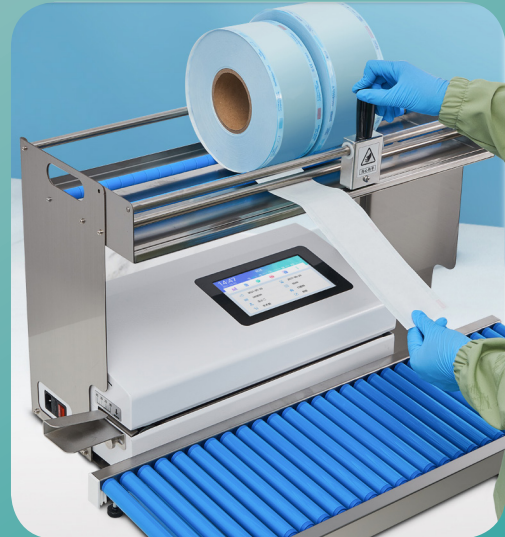
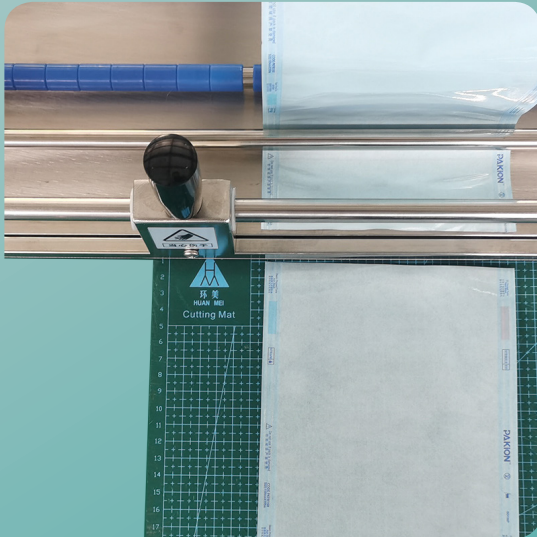


Medical Sealing Machine / Rotary sealer



Jiajing Medical Co., Ltd.

Tel: +86 150 6933 6827

Fax: +86 533 3880057

E-mail: info@sdjiajing.com

www.sdjiajing.com



Description

- Economic choice for making sterilization pouches. Sterilization reel holder, cutter and sealer are integrated into one. All you need to do is pressing the handle for fixing the reel and sliding the cutter. Then you will have one pouch for medical or laboratory instrument.

Features

- Heat-resistant carbon steel shell and aluminum alloy pressing plate prolong machine's life.
- Longer pressing handle saves you effort.
- Adjustable temperature for sealing multiple materials pouches.
- Overheating protection protect the operator and the machine.
- High quality sharp alloy blade produces pouches smooth and flat.
- Maximum allowable reel width is 280mm.

Specifications

Items	Description
Model	HCRseal-h1
Size	370×300×130 mm
Weight	5.0kg
Rated power	300W
Shell	Powder coated carbon steel
Components	Aluminum alloy, Stainless steel 304
Temperature range	Adjustable from 60 – 220°C
Sealed seam width	10mm
Sealing method	Manually applied sealing pressure
Rated power	500W
Max sealing width	280mm



Description

- Manual sealer is only applicable when demand for pouches is not large. HCRseal-10 rotary heat sealer seals pouches continuously and consequently its sealing velocity is much faster. In addition it has no limit on the width of pouches to be sealed.

Features

- Seal both PE/paper pouches and Tyvek pouches.
- Automatic rapid continuous heat sealing technology to improve packaging efficiency;
- Concise intuitive digital display and button to control;
- Precise temperature control makes your sealing meet related regulations. The temperature is adjustable from room temperature to 220°C, and the working temperature is accurately controlled to $\pm 1^{\circ}\text{C}$;
- Overheating protection invoked when the upper temperature limit is exceeded;
- Standby functionality prolongs sealer service life and reduces energy consumption. Standby time and temperature are adjustable;
- Seal width $\geq 12\text{mm}$; sealing strength meets the regulations of prEN 868-5:2007;
- High-temperature ceramic plus plate, heats up quickly, evenly, is high-temperature resistant, and has a long service life;

Specifications

Items	Description
Model	HCRseal-10
Size	535×232×188 mm
Weight	14kg
Rated power	400VA
Power supply	220V 50Hz / 110V 60Hz
Shell	Powder coated carbon steel
Sealing temp.	Ambient temp. – 220°C
Heating speed	Heat to 180°C within 40s (only for 220V power supply)
Sealed seam width	12mm
Sealing speed	$\geq 10\text{mm/min}$
Margin	0–35mm
Display	Digital tube
Control	Button



Description

- Built-in printer is used to print manufacture date, expiry date, operator, departement, lot number etc. information on the paper side, which may be essential in some countries or areas. With this you do not need to waste time writing that content down after or before sealing the pouches.

Features

- Automatic rapid continuous heat sealing technology to improve packaging efficiency;
- Built-in dot matrix printer prints manufacturing date, expiry date, operator and other information on the pouch during sealing;
- Intuitive touch panel displays status of the sealer and facilitate operation;
- Sealing temperature, printed content and other sealer configurations can be set by touch panel;
- Precise temperature control makes your sealing meet related regulations. The temperature is adjustable from room temperature to 220°C, and the working temperature is accurately controlled to $\pm 1^{\circ}\text{C}$;
- Overheating protection invoked when the upper temperature limit is exceeded;
- Standby functionality prolongs sealer service life and reduces energy consumption. Standby time and temperature are adjustable;
- Seal width 12mm; sealing strength meets the regulations of prEN 868-5:2007;
- High-temperature ceramic plus plate, heats up quickly, evenly, is high-temperature resistant, and has a long service life;
- Cartridge popup from side eases replacement.
- USB data export.

Specifications

Items	Description
Model	HCRseal-30
Size	535x232x188 mm
Weight	14kg
Rated power	400VA
Shell	Powder coated carbon steel
Sealing temp.	Ambient temp. – 220°C
Heating speed	Heat to 180°C within 40s (Only for 220V power supply)
Sealed seam width	12mm
Sealing speed	$\geq 10\text{mm/min}$
Margin	0–40mm
Display and control	7-inch touch panel
Built-in printer	Single line dot-matrix printing (can be disa-bled)



Description

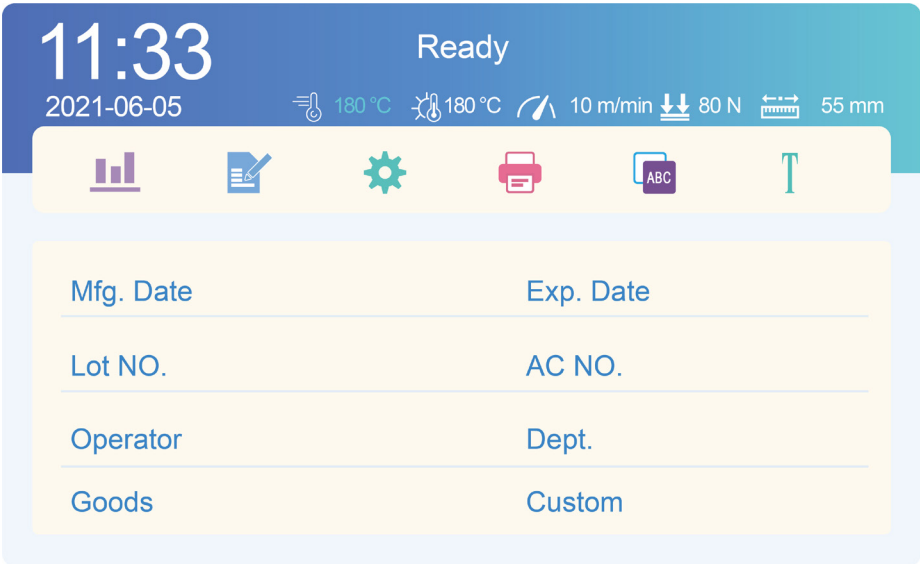
- The most distinctive feature of HCRseal-40 from HCRseal-30 is that it can print two lines of content on the pouch. If you have to print detailed content on pouches and the reel width is insufficient, this model is your ideal choice.

Features

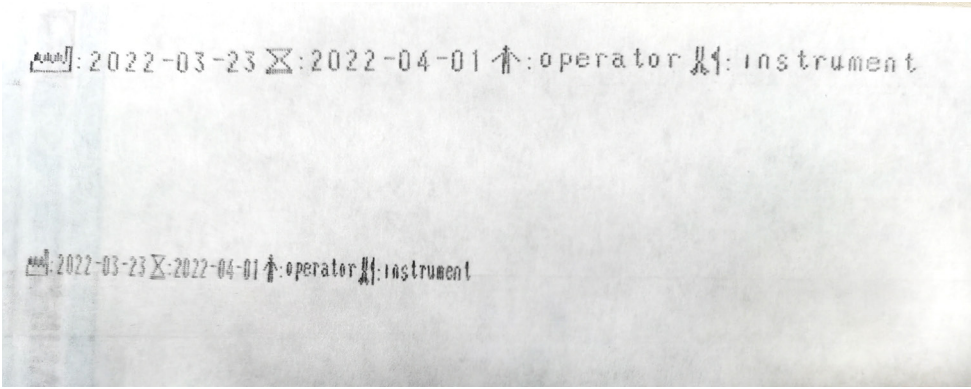
- Automatic rapid continuous heat sealing technology to improve packaging efficiency;
- Built-in dot matrix printer prints manufacturing date, expiry date, operator and other information on the pouch during sealing;
- Content is printed in two lines whereby more content can be printed on pouch;
- Intuitive touch panel displays status of the sealer and facilitate operation;
- Sealing temperature, printed content and other sealer configurations can be set by touch panel;
- Precise temperature control makes your sealing meet related regulations. The temperature is adjustable from room temperature to 220°C, and the working temperature is accurately controlled to $\pm 1^{\circ}\text{C}$;
- Overheating protection invoked when the upper temperature limit is exceeded;
- Standby functionality prolongs sealer service life and reduces energy consumption. Standby time and temperature are adjustable;
- Seal width 12mm; sealing strength meets the requirements of prEN 868-5:2007;
- High-temperature ceramic plus plate, heats up quickly, evenly, is high-temperature resistant, and has a long service life;
- Cartridge popup from side eases replacement;
- USB data export.

Specifications

Items	Description
Model	HCRseal-40P
Size	535×232×188 mm
Weight	14kg
Rated power	400VA
Shell	Powder coated carbon steel
Sealing temp.	Ambient temp. – 220°C
Heating speed	Heat to 180°C within 40s (Only for 220V voltage)
Sealed seam width	12mm
Sealing speed	$\geq 10\text{mm/min}$
Margin	0–40mm
Display and control	7-inch touch panel
Built-in printer	Double line dot-matrix printing (can be disa-bled)



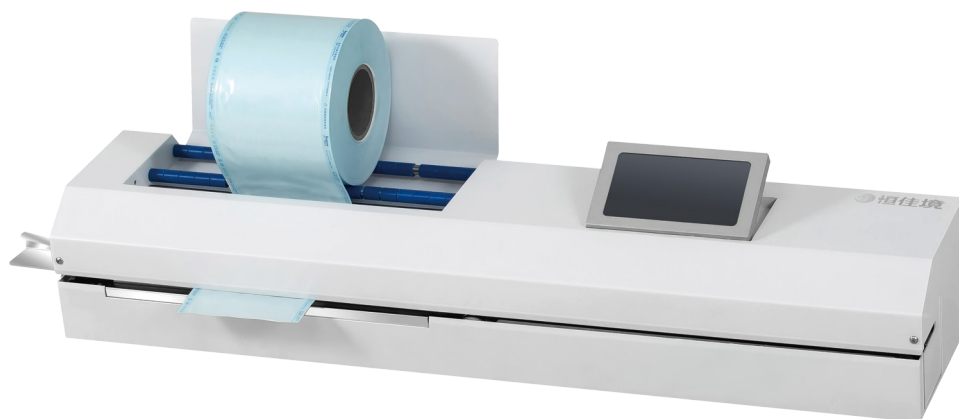
Built-in printer rotary sealer interface



Printer performance of single line



Sealing Tyvek pouch performance



Description

- Automatic reel feeding, cutting and printing content, all functions are integrated in one machine. Operator could set quantity and length of pouches to be cut. Multiple reels can be placed on the holder to improve efficiency. Also you can only use its sealing function separately.

Features

- 7-inch touch panel to control how the pouches are produced and sealed.
- Real-time monitoring of working condition, pressure, pouch width prompt and fault alarm.
- Printing module pop-up from side, facilitating replacement of printing cartridge.
- Sealing records can be exported via USB port.
- Double-line 24-pin dot matrix printer makes the printing clear, and easy to read.
- 8 items of content, like manufacturing date, expiry date, operator etc. can be selected to print on the pouch. Items can also be disabled if you do not want them to be printed.

Specifications

Items	Description
Size	1020*232*188 mm
Sealing speed	10 m/min
Margin	0 – 35mm
Sealing temp.	Ambient temp. – 220 °C
Heating rate	180 °C/40s
Seal width	12 mm
Reel maximum width	400 mm
Cutting speed	18±0.5 m/min
Printing	Double-line
Control panel	7-inch
Rated power	500W



Description

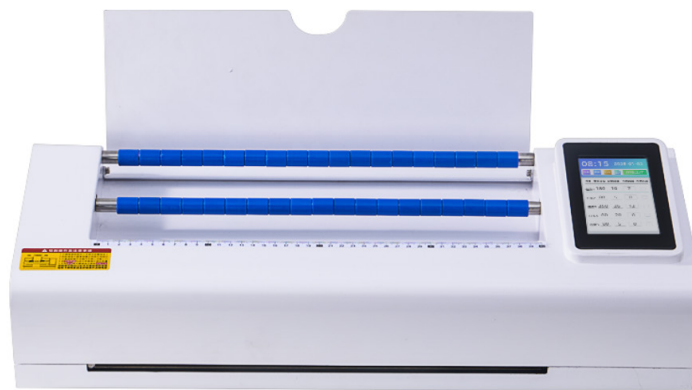
- Automatic reel feeding, cutting and printing content, all functions are integrated in one machine. Operator could set quantity and length of pouches to be cut. Multiple reels can be placed on the holder to improve efficiency. Also you can only use its sealing function separately. hhhh, the specifications

Features

- Rolls manual / automatic cutting function. Length and quantity of the pouches can be changed.
- Printing module pops up from side, facilitating cartridge replacement.
- Real-time monitoring running conditions and automatic alarm.
- Automatic calculation and display of the pouch width needed to print content on.
- Sealing history can be saved.

Specifications

Model	HCRseal-50B	HCRseal-50C
Size	540*232*215 mm	540*232*215 mm
Weight	15kg	15kg
Power	500W	500W
Shell material	Powder coated carbon steel	Powder coated carbon steel
Roll cutting	Manual	Automatic
Cutting speed	Manual	15±0.5m/min
Roll width	≤330mm	≤330mm
Sealing temp.	R. T. – 220°C	R. T. – 220°C
Sealed seam width	12 mm	12 mm
Sealing speed	≥10m/min	≥10m/min
Margin	0 – 40 mm	0 – 40 mm
Display & control	7-inch touch screen	7-inch touch screen
Printing	2-line dot matrix	2-line dot matrix
Pressure monitor	Yes	Yes
Data export	USB	USB



Description

- Healthcare workers in hospitals and medical facilities used to use scissor or manual reel cutter and holder to make sterilization pouches. If the required quantity is not large, like 100-200 pieces one day, that's fine. But if large quantity of pouches are needed, that will be a big headache for medical workers, when making thousands of sterilization pouches of required length needs enoumous labor and time. To solve this, Jiajing Medical developed this affordable automatic reel cutter.
- HCRseal-Q400/500 will automatically produce the pouches after you set the required length and quantity. After start the cutting process, you can concentrate on other more important and creative work.

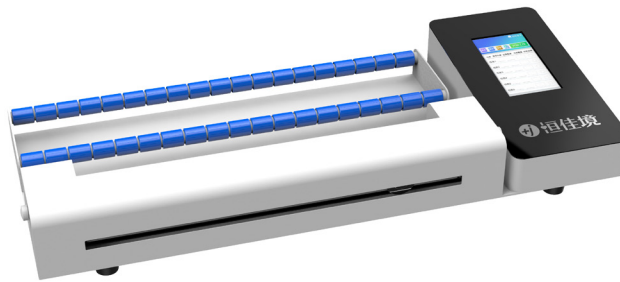
Features

- Ease of use. Only need to set required pouch length and quantity, automated feeding and cutting can be accomplished after starting the machine.
- Multiple reels of various width can be loaded on the reel holder and loaded reels can be cut simultaneously.
- Wide reel holder can hold reels of width up to 400mm or 500mm
- Cutting velocity 20m/min. Produce 4000-5000 pouches per hour
- Microcomputer controlled feeding and cutting process, and built-in optical sensors guarantees the length of produced pouches.
- Gussetted and flat reels can both be cut with the aid of elastic pressing rollers.
- English control panel ease your control over the cutter.
- Automatic counting of produced pouches and malfunction alarm.

* (Note: Technical specifications may vary based on model and configuration.)

Specifications

Model	HCRseal-Q400	HCRseal-Q500
Size	610*230*160 mm	710*230*160 mm
Weight	12 kg	20 kg
Rated power	100W	150W
Effective Cutting Width	400mm	500mm
Shell	Powder coated carbon steel	
Component	Aluminium alloy, SUS304	
Cutting speed	20±0.5m/min	
Control	5-inch touch panel	
Power supply	220V 50Hz / 110V 60Hz	
Working condition	Ambient temp.: 5–45 °C	



Description

- Different from hospital, some dental clinics space is limited. Also their requirements for cutting capacity is not as high as the hospital. They just need a compact machine that saves health worker labor and time. This is why HCRseal-Q300 comes into being.

Features

- Small size occupies less space
- Ease of use. Only need to set required pouch length and quantity, automated feeding and cutting can be accomplished after starting the machine.
- Microcomputer precisely controls the length of every pouches produced.
- Cutting speed 15m/min.
- Microcomputer controlled feeding and cutting process, and built-in optical sensors guarantee the length of produced pouches.

Specifications

Model	HCRseal-Q300
Size	540*235*100 mm
Weight	4.5 kg
Rated power	70W
Effective Cutting Width	300mm
Shell	Powder coated carbon steel
Component	Aluminum alloy, SUS304
Cutting speed	15±0.5m/min
Control	4.3-inch touch panel
Power supply	220V 50Hz / 110V 60Hz
Working condition	Ambient temp.: 5–45 °C

Bench-top roll-holder and cutter

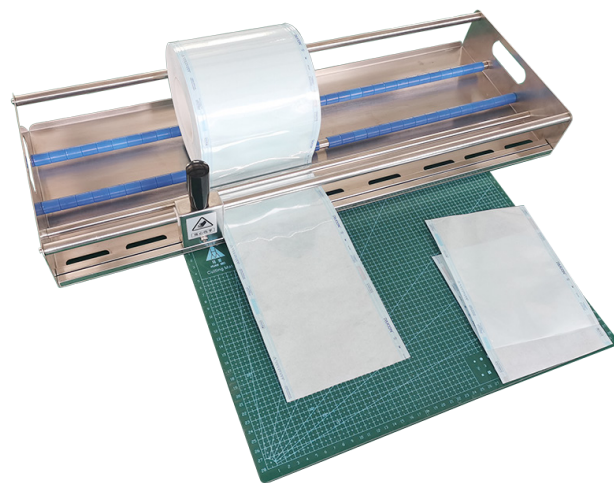
Model: C700-1/C600-1

Dimension: 700*260*82 mm (C700-1)

600*260*82 mm (C600-1)

Characteristics:

- 304 stainless steel smooth shaft and side plate, beautiful and durable.
- High quality rotary blade ensure neat and beautiful edge.
- Spaced rollers reduce damping and interference from other reels.
- Sufficient width to hold multiple reels.



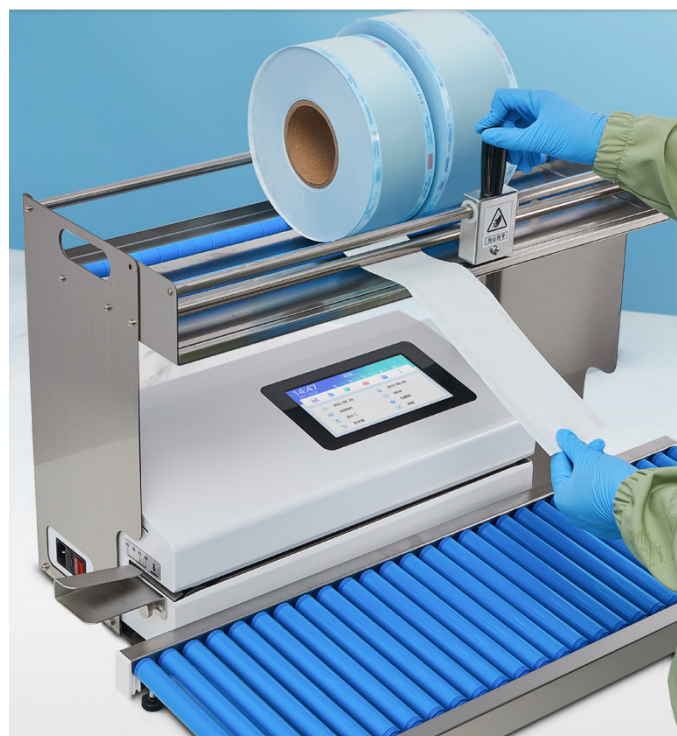
Shelved roll-holder and cutter unit

Model: C600-2

Dimension: 600*260*400 mm

Characteristics:

- Spare space for sealing machine, saving more space.
- 304 stainless steel smooth shaft and side plate, beautiful and durable.
- High quality rotary blade ensure neat and beautiful edge.
- Spaced rollers reduce damping and interference.



Front sliding table with rollers



Model: RP-1/RP-2

Dimension: 660*242*(52-72)mm (RP-1)

500*242*(52-72)mm (RP-2)

Characteristics:

- 304 stainless steel frame, built-in bearing make it durable and roll smoothly.
- Height-adjustable feet. Suitable for various types of sealing machines.
- Frame made of 304 stainless steel and rollers made of excellent ABS plastics
- **Customizable as per your requirements.**

Stainless steel sliding table



Model: SP-660

Dimension: 660*240*40-60mm

Characteristics:

- Adjustable feet enables suitability for various types of sealing machines.
- Smooth surface reduces friction and facilitate items movement

Multifunction Packing Table



Model: multifunction Packing Table **WS-101**

Dimension: 1500*650*1800mm

Characteristics

- Made of 304 stainless steel, robust and easy to clean.
- Suitable for various packing material.
- Two drawers and several trays for accommodating more material and instruments
- Easy to move with quiet casters.



Model: multifunction Packing Table **WS-102**

Dimension: 1500*680*1800 mm

Characteristics

- Made of 304 stainless steel, robust and easy to clean.
- Suitable for various packing material.
- Two deep baskets and several trays accommodate and several trays for accommodate more material and instruments.
- Two layers of holder hold more reels.
- Built-in cutter facilitates making pouches.
- Easy to move with quiet casters.



Specifications

Model	HCRsonic-60L	HCRsonic-80L	HCRsonic-100L
Outer size	600*500*650	700*550*850	900*650*850
Tank size/mm	500*400*300	600*450*300	700*440*350
Volume	60L	80L	100L
Timing range	0-888min	0-888min	0-888min
Temp. range	R.T.-99°C	R.T.-99°C	R.T.-99°C
Heating power	3000W	4000W	6000W
Ultrasonic power	1200W	1500W	1500W
Ultrasonic frequency	40kHz *		
Water addition and drainage	Electrical control		
Accessories	Stainless steel basket		

* Other frequencies 40kHz, 80kHz, 100kHz are available and single, double, triple frequency can be customized

Features

- One click to finish whole cleaning process including heating, ultrasonic cleaning and auto shut-down.
- Color LCD display panel with PLC programmable control. Multiple automatic cleaning programs available.
- Oscillating tank temperature, working time, alarm info etc. is displayed and automatic malfunction detection and troubleshooting prompt.
- Safety. Current leakage, over heating, over voltage and over current prompt and protection. Solution depletion protection.
- Automatic logging. Cleaning parameters of each cleaning process, accumulated running time, set cleaning time and temperature will be saved.
- Ultrasonic frequency. Three frequencies, 28kHz, 40kHz, 80kHz, 100kHz, can be selected from and single, double, triple frequency mode can be customized.



Specifications

Model	HCRsonic-5L	HCRsonic-10L	HCRsonic-28L
Outer size	325*180*225	325*265*280	530*325*325
Tank size/mm	300*150*100	300*240*150	500*300*200
Volume	4.5L	10L	30L
Timing range	0-30min	0-30min	0-30min
Temp. range	20–80°C	20–80°C	20–80°C
Ultrasonic power	180W	240W	600W
Degassing		Optional	

* Oscillating tank volumes of 3.2L, 15L, 22L are also available



Specifications

Model	HCRdry-20	HCRdry-40	HCRdry-70
Chamber volume	20L	45L	75L
Chamber size/mm	260*280*270	380*360*330	400*400*450
Outer size/mm	395*360*560	495*460*620	590*535*800
Power supply	AC 220 50Hz		
Power consumption	600W	1100W	2000W
Temp. range	ambient +10. – 250 °C		
Temp. heating rate	R.T.+10°C – 90°C within 20minutes		
Control	PID controller		
Weight	27kg	38kg	47kg

Features

- Outstanding temperature uniformity and stability to keep samples at desired condition (forced air convection)
- Wide temperature range: ambient + 10° – 250 °C
- Intuitive and easy to read fluorescent display
- Automatic over temperature alarm
- Built-in timer for automated operation
- Corrosion resistant stainless steel interior.
- Manual controlled fresh air damper to adjust air exchange
- Flexible shelving system with different positions to optimize chamber space

Application

Dry instruments before packing.



Specifications

Model	HCRdry-D400	HCRdry-D600
Chamber volume	400L	600L
Door type	Single / double door(s)	Single / double door(s)
Outer size/mm	900*490*2000	900*690*2000
Work area/mm	600*400*1500	600*600*1500
Rated power/W	10kW	12kW
Temp. range	40 – 90 °C	
Timing range	1 – 999 minutes	
Control	Touch screen and PLC control	
Weight	300kg	330kg

Description

- Medical instruments drying cabinet is a large-capacity drying equipment, suitable for central supply department, operating rooms and other facilities, where large drying capacity is necessary.

Features

- Made of high-quality stainless steel, corrosion-resistant and easy to clean
- Double-sided air supply design, with heat insulation interlayer.
- Drying time 1-999min adjustable.
- Large insulated safety glass makes it convenient for observation
- Optimized air duct and circulation system makes internal temperature uniform
- Gentle air flow convection system improves temperature uniformity.
- Touch screen PLC control system; three built-in drying programs; adjustable operating parameters.
- Number of shelves can be customized.
- UV lamps can be added but not recommended. High temperature may shorten the lamp service life.



Features

- One single machine for multiple uses: cleaning, lubricating and drying. Automatic control.
- Clean and lubricate 15 dental handpieces at a time, greatly improving work efficiency
- Reduce for handpiece cleaning and lubricating, improving efficiency and preventing cross infection.
- 360° cover-all spray cleaning, no dead corners, in conjunction with detergent quickly removes stubborn dirt
- Lubricant and detergent pipelines are separated and can be adjusted separately.
- Each group has a lubricant valve to meet different lubricant needs.
- Touch screen panel controlled automatic operation. Preset 4 programs Enchanted cleaning (80 min), Standard cleaning (30 minutes), Quick cleaning (16 minutes) programs, just one click to finish process.

Specifications

Model	HCR-WM15
Size	430*510*450mm
Rated power	950W
Power supply	220V 50Hz
Water consumption	4.5L
Power supply	AC 220 50Hz
Intake water pressure	0.04 –1.0 MPa
Intake air pressure	0.45 – 0.8 MPa
Capacity	12 high-speed handpieces and 3 low-speed handpieces